

Meghalaya's Annual Plan-2011-12



BASIC STATISTICS

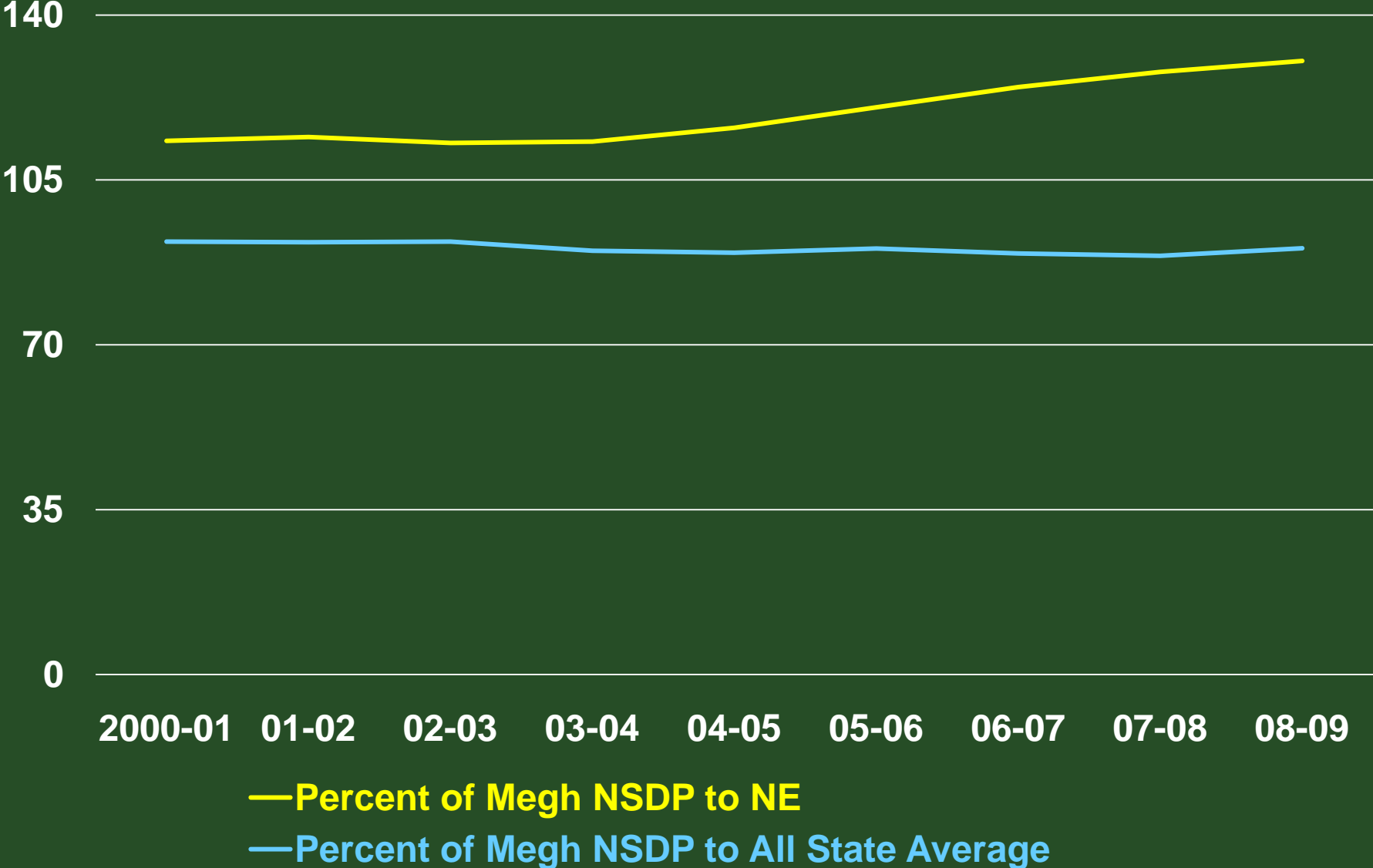
	INDIA	MEGH
Geographical Area [sq. Km]		22,429
Population (2011 Provisional Census) [lakh]	12101.93	29.64
Population density [Per sq. km]	382	132
Total no. of inhabited villages	593731	5782
Below 200 population villages		2762 (49%)
Sex ratio (per '000) (2011 Provisional Census)	940	986
Literacy Rate (2011 Provisional Census)	74.04	75.48
Gender gap in literacy rate (2011 Provisional Census)	16.68	3.4
Birth rate (per '000) SRS 2009	23.1	24.4
Death rate (per '000) SRS 2009	7.4	8.1
Road Density (per 100 sq Km)	75	40.81
Forest cover (SFR, 2009)	21.02	77.23
Villages electrified [%]	84.2	68
CD Ratio [Sept/December, 2010]	73.60	33.43

SIGNIFICANT ACHIEVEMENTS

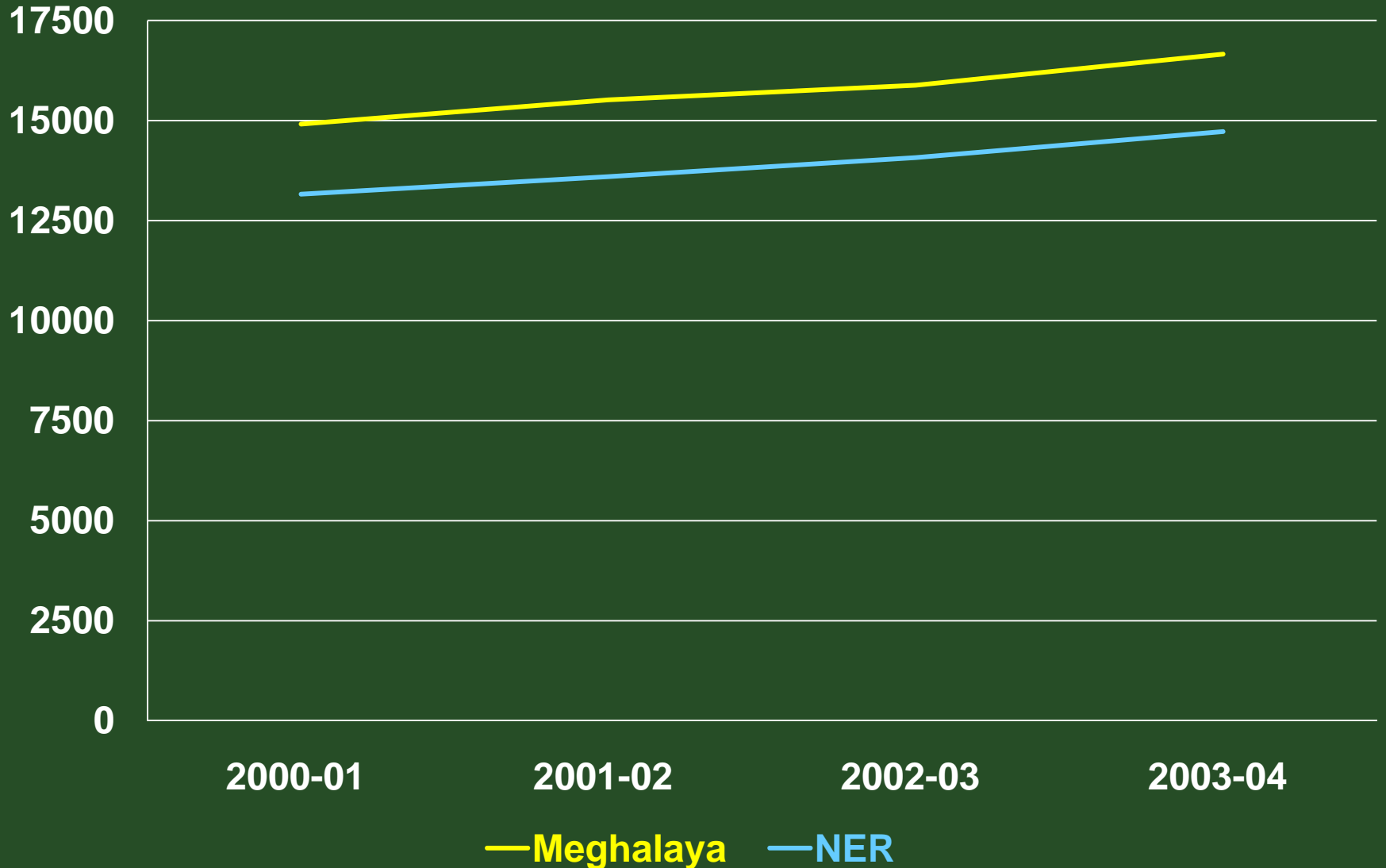


- Literacy (higher than national average)
- Growth in Agriculture Sector
- Horticultural Revolution – 3rd largest producer of Strawberry in India
- Higher Growth Rate
- Road Connectivity
- Large English speaking population
- Better Fiscal Management
- Greater Resource Mobilization

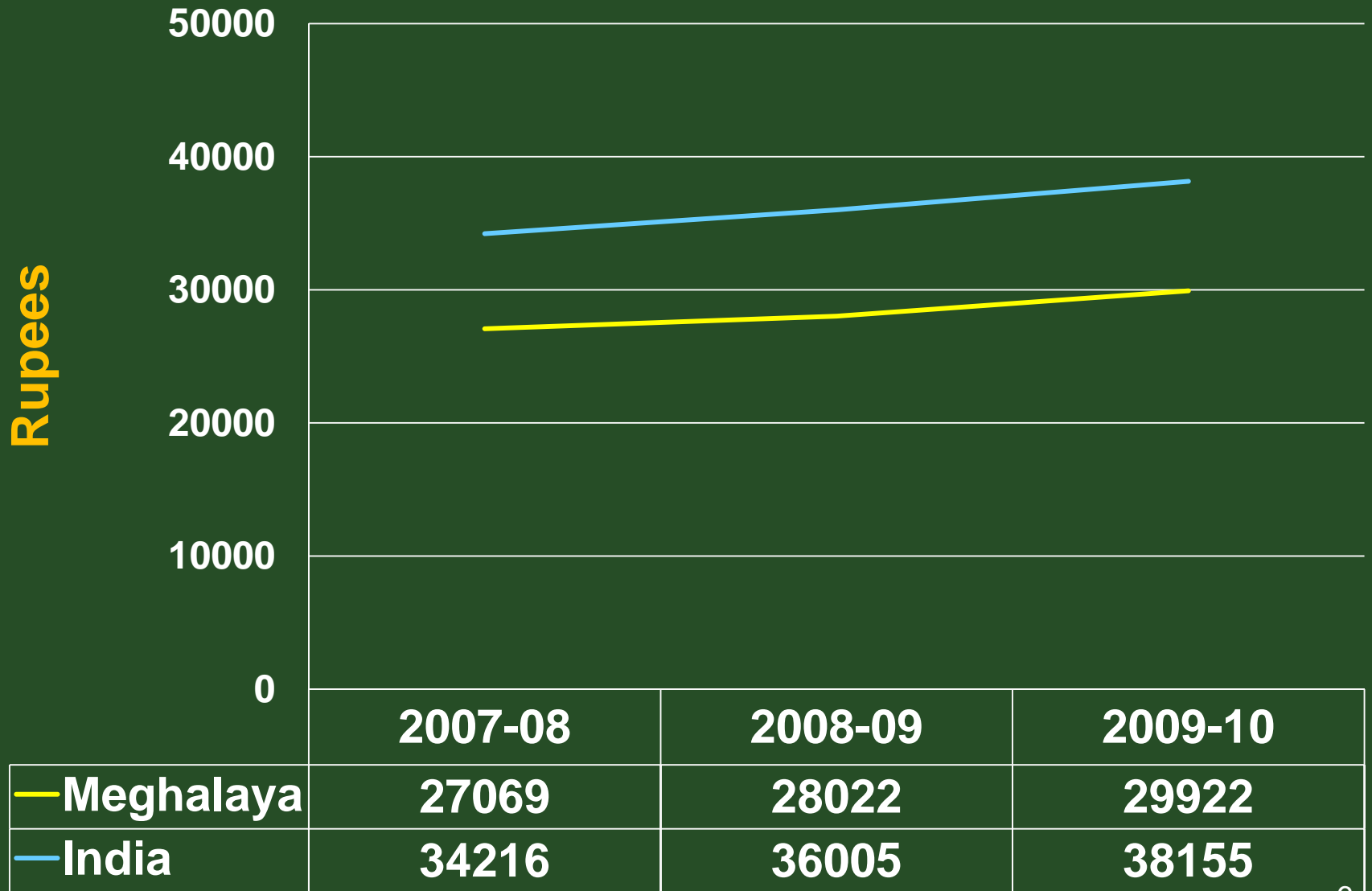
Per Capita Income Growth Trends



Comparison of Per Capita Income : Megh & NER



Per Capita Income



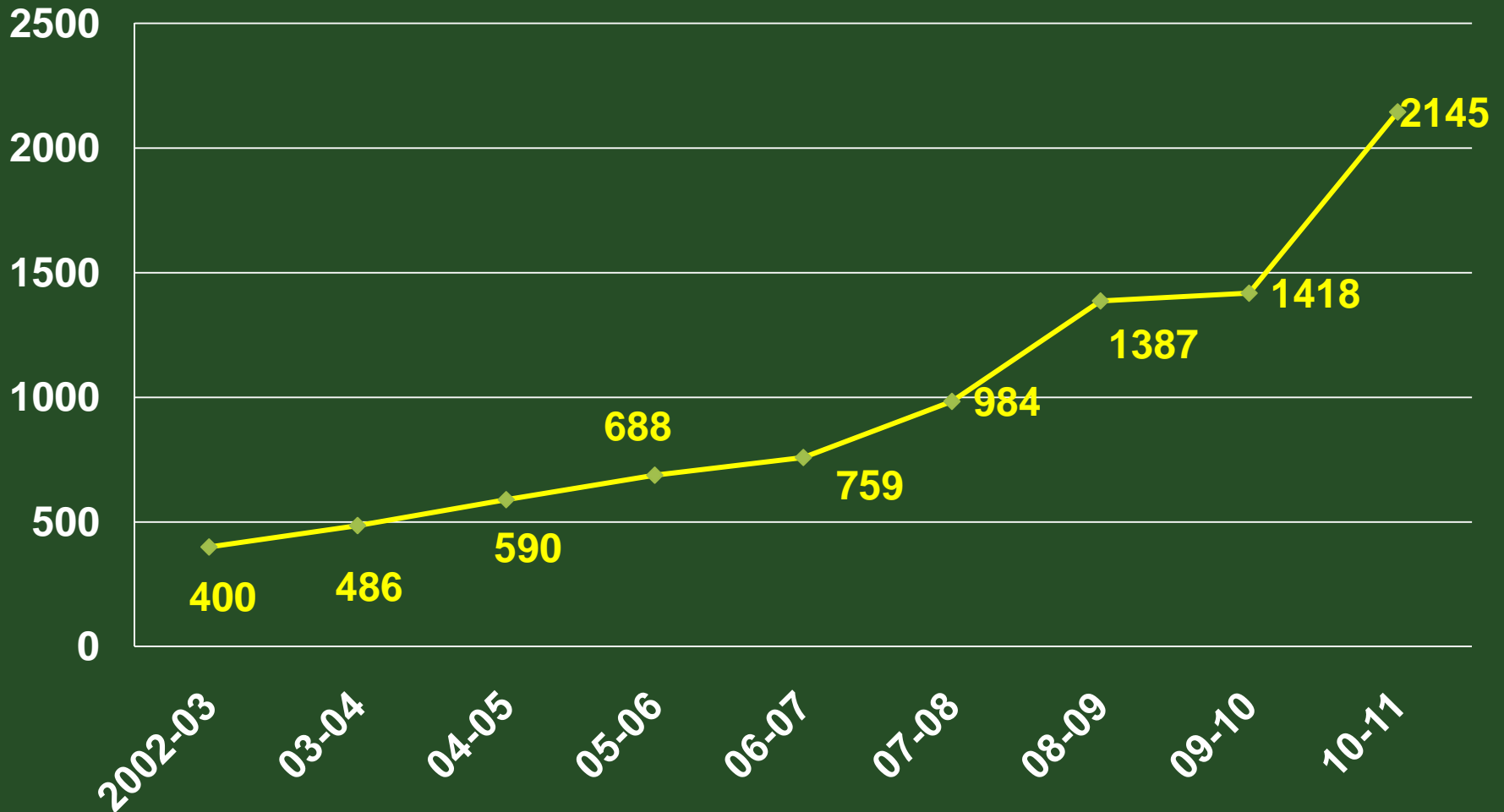
Growth Opportunities



- Rich Natural Resource Base
- Bio-diversity Hotspot
- Revival of Border Trade with Bangladesh – opening trade routes to South East Asia
- High value Horticulture & Floriculture
- Traditional Center of Excellence in Education.
- Traditional skill sets
- Substantial hydro-power potential

State Plan Investment during 10th & 11th Plan

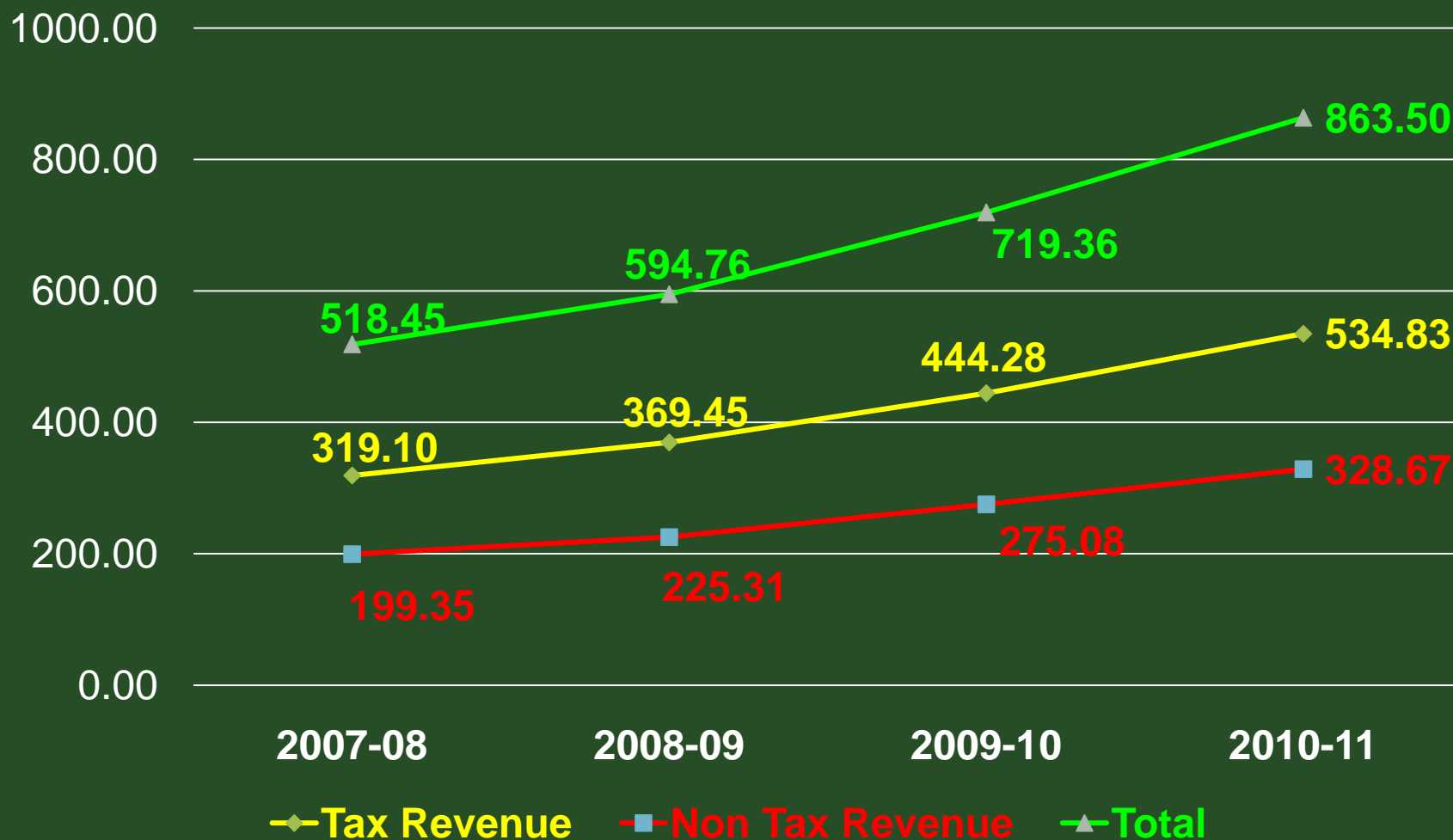
Expenditure [in Rs. crore]



Resource Mobilisation Efforts

- Raising of VAT rates by 1 percentage point.
- Streamlining of collection of taxes on luxuries.
- Imposition of cess of Rs. 20 per MT on cement.
- Introduction of ad valorem system of taxation & holograms on liquor.
- Rationalization of motor vehicle taxes.
- Revision of registration fees and stamps.
- Introduction of electricity duty.
- Recovery of tax arrears.
- Systemic improvement to plug leakages.

State's Own Resources [in crore]



Percentage increase in SOR

2007-08	Base Year	2009-10	20.3 %		
2008-09	14.7 %	2010-11	20.4 %		

Recent Initiatives

- Environmental protection of Cherrapunjee belt
- Launching of Integrated Basin Development & Livelihood Programme.
- Setting up of Institute of Governance
- Setting up of Institute of Entrepreneurship
- Establishment of model schools
- Value Chain Management in Horticulture, Animal Husbandry, Fisheries, Sericulture & Weaving.
- Setting up of Medical College, Mobile Cancer Detection Units
- Institute of Music
- International standard football stadium
- Climate Change Management

Recent Initiatives

- Financial Management
- Step up investment absorption capacity
- Convergence
- Capacity Building
- Climate Change Adaptation Programme
- PPP
- Improving transparency & accountability
- Improving market connectivity
- Integration with Autonomous District Councils & traditional institutions.
- Jalkunds
- Re-opening of border haats
- Upgradation of Land Custom Stations.



CHERRAPUNJEE ECO PROJECT

Goal – Comprehensive intervention for restoring the productivity and sustainability of eco system and livelihoods associated therewith.

STRATEGY

- **Scientific planning, knowledge management and sharing**
- **Community capacity Building and promotion of entrepreneurship.**
- **Decentralised planning and Participatory approach**
- **Convergence of initiatives and viability gap funding.**
- **Livelihood orientation in order to have strong stakeholder base.**
- **Robust governance mechanism with thrust on transparency, accountability and social audit.**
- **Integration with Basin Development & Livelihood Programme, Climate Change Management initiative.**

IMPORTANT ACTIVITIES

- **Creation of a cadre of BEE's (Barefoot Environment Educators)**
- **Multiple nurseries at different altitudes/agro climatic zones.**
- **Introduction of High Yielding and Improved varieties of horticulture species.**
- **Encouragement of community nurseries for production of quality planting material and promoting participation, income earning and sense of ownership.**
- **Promotion of livelihood and eco tourism activities.**
- **Usage of alternative fuel wood consumption.**

Child Labour in mining areas

- An NGO reported 70,000 illegal child labour from Nepal & Bangladesh.
- However, State Govt's joint survey in 2010 has revealed 220 cases.
- Survey on child labour instituted through NEHU – final report expected shortly

Child Labour

Measures taken by State Government –

- Teachers notified as inspectors
- Enforcement drive undertaken – 95 inspections.
- Awareness campaign
- Involvement of village heads and reputed NGOs.
- Back-to-School Camps under SSA

Mining Policy

- Major mineral resources – coal, limestone, uranium.
- Mining – largely unregulated at present.
- Draft mineral policy prepared and notified for public consultation.
- Extensive consultations with stakeholders – mine operators, land owners, traders, transporters, NGOs, District Councils.
- Provides for regulation under extant statutory framework.
- Coal to liquid initiative may promote scientific mining.

Challenges...



- Excessive dependence on and over exploitation of natural resources – e.g. coal
- Widening gap between the rich and the poor
- Inadequacy of delivery system
- Fragile ecology
- Governance deficit
- Coordination between the traditional systems of governance and the formal State apparatus

State Action Plan on Climate Change

- Nine sectoral working groups formed including one on governance reform.
- Meghalaya State Council on Climate Change and Sustainable Development (MSCC&SD) under Chairmanship of Chief Minister
- Steering Committee on Climate Change chaired by Chief Secretary being formalised.

11th Plan Investment

			<u>[Rs. crore]</u>
Plan	Original Outlay	Revised Outlay	Expenditure
2007-08	1120.00	1016.82	984.06
2008-09	1500.00	1425.00	1386.96
2009-10	2100.00	1655.26	1417.86
2010-11	2230.00	No Revision	2145.00
11th Plan	9185.00	-	5933.88
Balance amount = Rs. 3250 crore			

Proposal for Annual Plan 2011-12

Sectors	[Rs. crore]	%tage to
	Proposed allocations	Total
Agriculture& Allied Services	265.44	9.73
Rural Development	168.51	6.18
Special Area Programme	18.75	0.69
Irrigation & Flood Control	121.85	4.47
Energy	669.90	24.75
Industry & Minerals	54.40	1.99
Transport	333.30	12.22
Sc, Tech & Environment	53.95	1.98
General Eco. Services	133.55	4.90
Social Services	813.95	29.85
General Services	93.40	3.43
Total	2,727.00	100.00



Initiatives that require support during 2011-12 & 12th Plan

- Strengthening infrastructure & delivery system for health & education services.
- Energy security.
- Rural Development & Poverty Alleviation.
- Strengthening entrepreneurship development initiative with special focus on dropouts and unemployed youth.
- Strengthening governance framework.
- Strengthening basin development & livelihood programme.
- Greater financial inclusion & inclusive growth.
- Improve production, productivity and profitability of agriculture & allied activities.

- Strengthening road network specially with a view to facilitating greater market connectivity.
- Restoration of ecologically degraded areas such as Cherrapunjee.
- Climate Change Initiative.
- Integrated Water Resource Management.
- Bio-diversity Management.
- Coal to liquid project.



Proposals for Consideration

- More untied funds
- Sustained investment in newly created institutions
- Special Central Assistance for Integrated Basin Development Programme
- Funding of Climate Change Adaptation initiative
- One time assistance for completion of ongoing last mile infrastructure projects
- Approval of Annual Plan size of Rs.2727 Crore with provision for upward revision to the level of Rs. 3500 Crore on the basis of review after second quarter.



THANK YOU